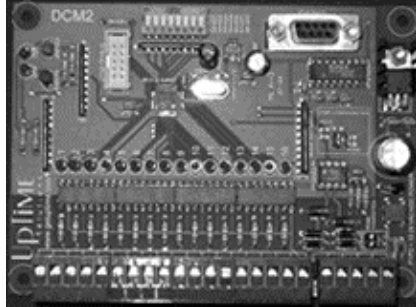


Expandable Digital Controller (DCM-2)



Description

The DCM-2 provides an ideal solution where discrete input is necessary or where the Smart Interface Module can't be used. Situations requiring digital input monitoring or equipment that lacks communications capability are typical candidates. The DCM-2 communicates with IntelliSite over an IBUS network controller.

Features

- Standalone capability for limited monitoring / control applications
- 16 AC/DC opto-isolated inputs (12-24V)
- Serial Port: 1 (RS232/RS485)

Specifications

Power	12Vdc @ 100mA (all outputs contacts closed)
Communications	1 RS232 serial ports 1 RS485 port Philips I2C expansion bus
Dimensions	4" x 4.5" x 1"
Operating Temperature	32° - 158° F (0° - 70° C)